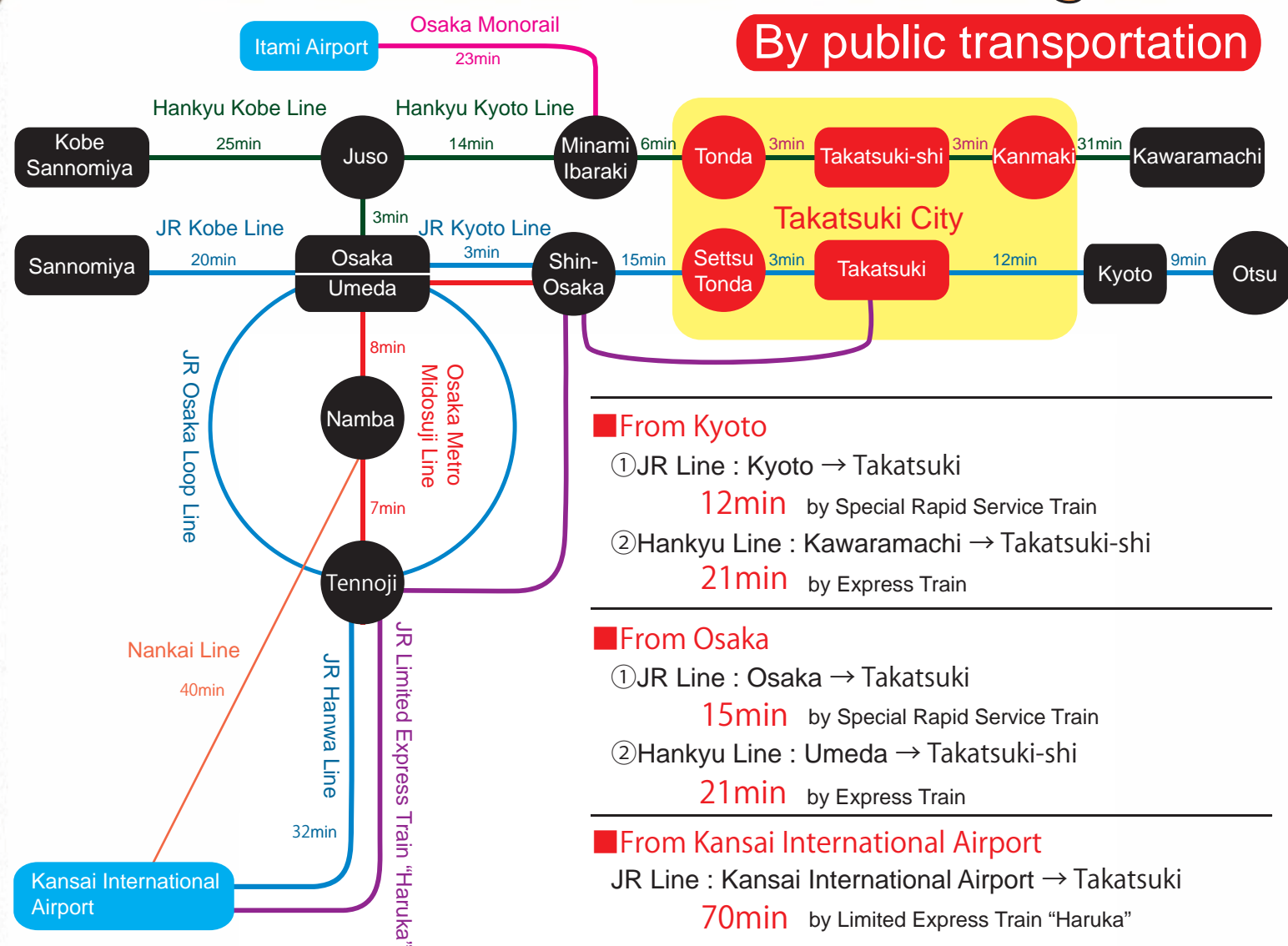


## Takatsuki directions

# Getting to Takatsuki

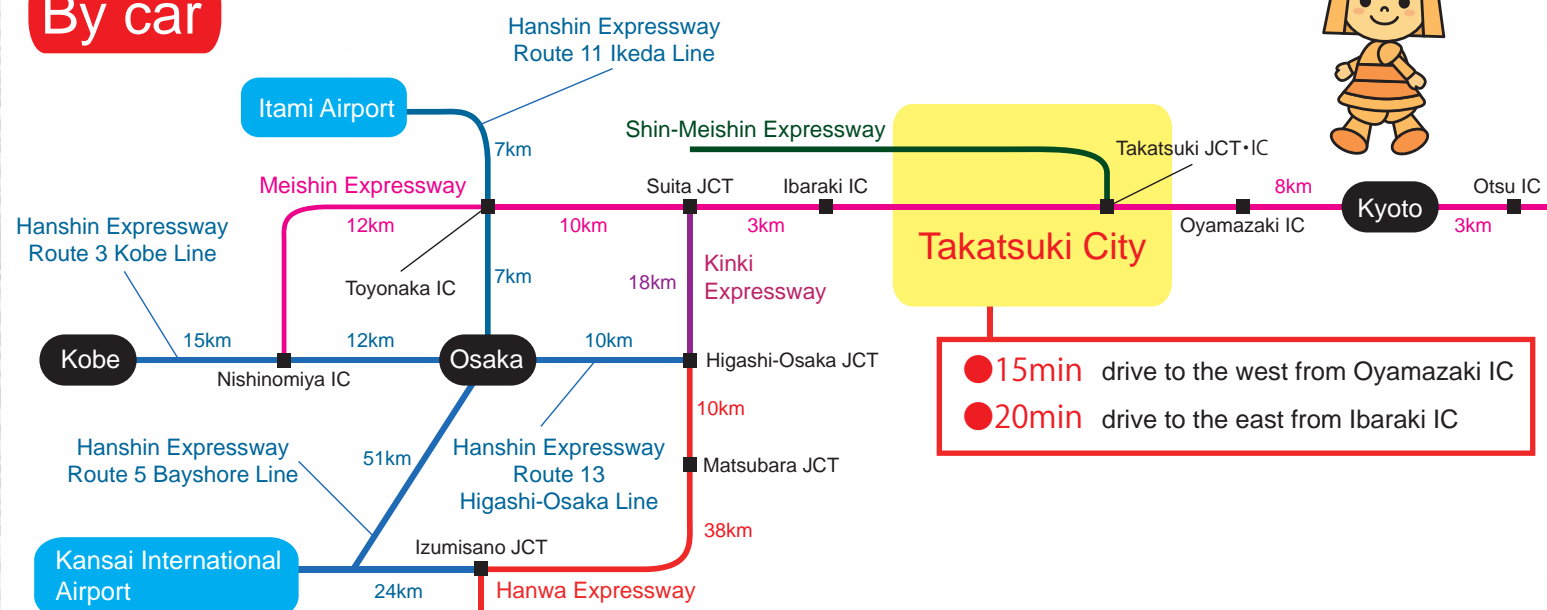


## By public transportation



※All necessary times for access to Takatsuki are approximate.

## By car

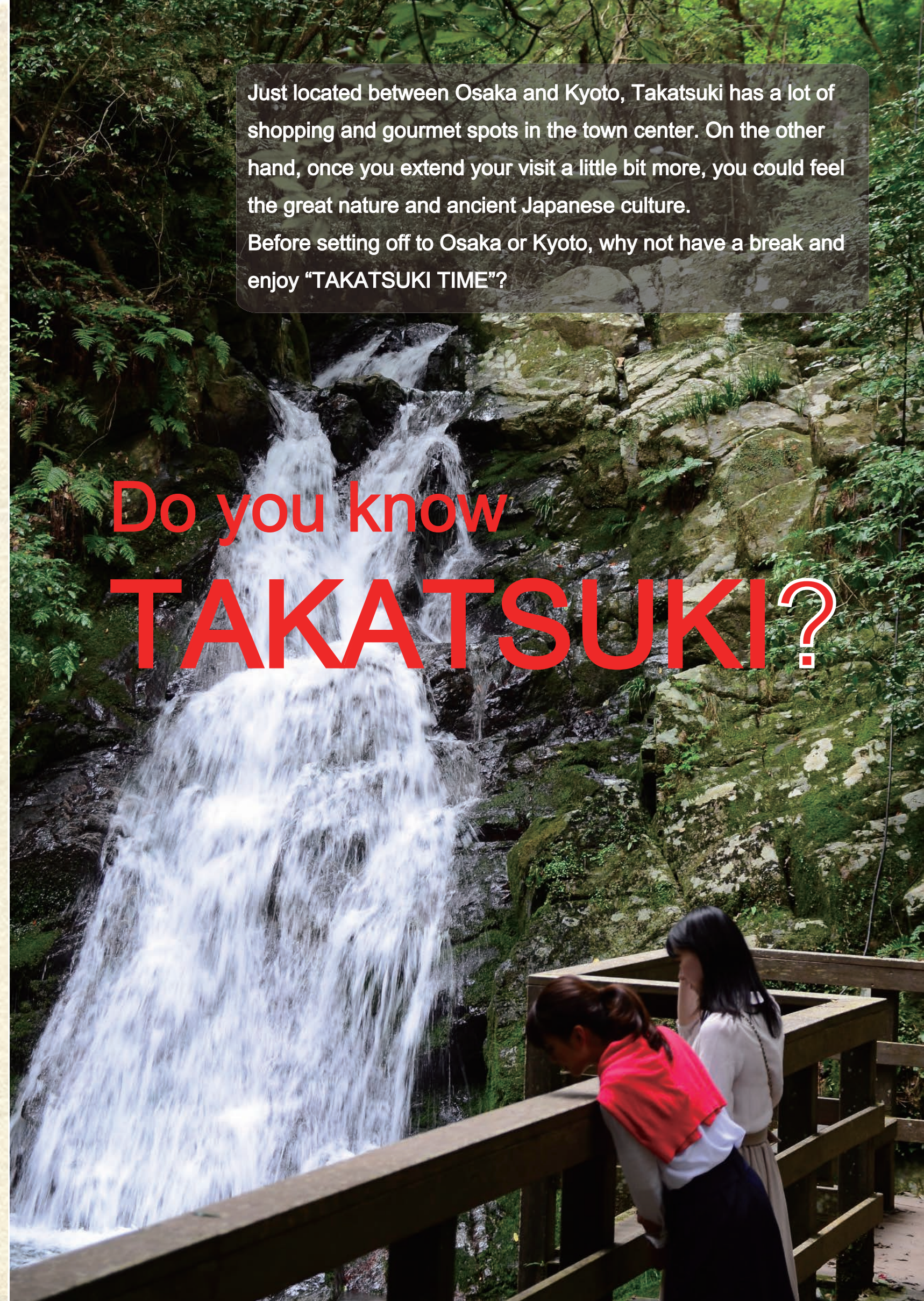


※All necessary times and distance for access to Takatsuki are approximate.

Just located between Osaka and Kyoto, Takatsuki has a lot of shopping and gourmet spots in the town center. On the other hand, once you extend your visit a little bit more, you could feel the great nature and ancient Japanese culture.

Before setting off to Osaka or Kyoto, why not have a break and enjoy "TAKATSUKI TIME"?

# Do you know TAKATSUKI?





Spring - cherry blossoms -



# Settsu-kyo Park

- Breathtaking beauty of the ravine -

Settsu-kyo Park is just 25 min. bus ride from JR Takatsuki station. Easy to get there, and the great nature you could feel there. Taking a walk along the clear stream, you could see beautiful waterfalls and oddly-shaped rocks. Settsu-kyo Park is also famous for cherry blossoms in spring and colored leaves in autumn.



A sunrise scene from the Park



Cherry blossoms in full bloom



# Tonda local sake

- Sake breweries since 400 years ago -

Tonda area used to be famous for production of good sake in Edo period (From 1603 to 1868) because plenty of clean water and harvested rice is available in the area. Now, two sake breweries remain and keep producing sake. Once you step into one of the alleys in onda, you could enjoy old Japanese townscape, including the sights of old sake storehouses.



Kotobuki brewery

Established in 1822, Kotobuki brewery produces several brands of high quality sake, including award winning high quality sake, "Kuni-no-cho". Just as its motto "Challenge to make something new", the brewery also makes original craft beer beside sake.



Kiyotsuru brewery

Established in 1856, Kiyotsuru brewery keeps its traditional sake brewing technique handed down from Edo period to produce Tonda local sake.



# Takatsuki castle

## Ukon Takayama - The Christian feudal lord -



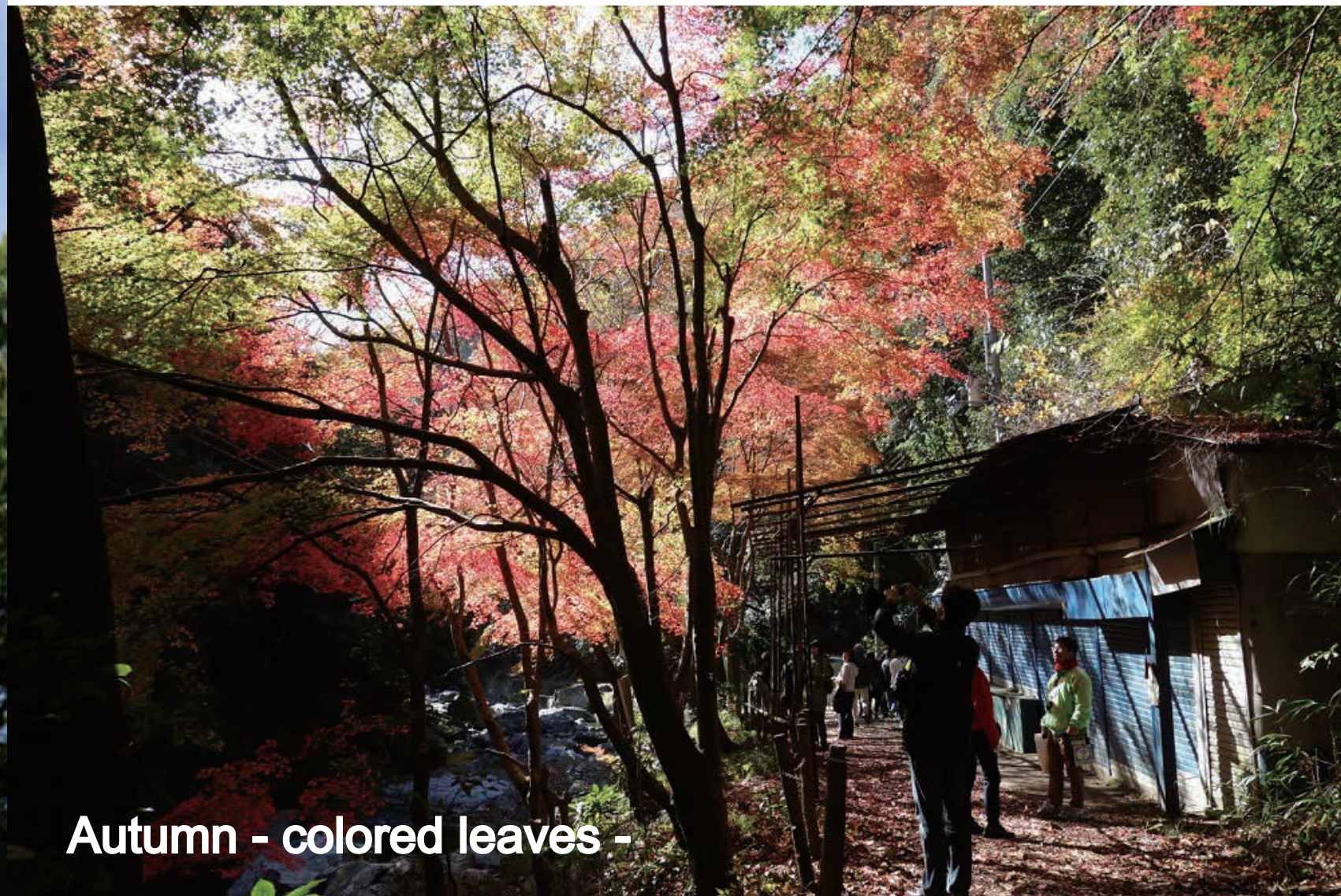
Shiroato Park



Shiroato history museum



Takatsuki Catholic Church



Autumn - colored leaves -

Just like Osaka has Osaka castle, Takatsuki used to have Takatsuki castle. Unfortunately, the later was demolished around 150 years ago. The site was enhanced afterward and is now used as a public park, and a museum of history was built nearby. Ukon Takayama, a Christian feudal lord in 16th century, is the key person in the castle's history. Known as a versatile, good looking, and great warrior, he became the lord of Takatsuki castle as young as 21. Also as a devout Christian, he had never surrendered even after Tokugawa shogunate banned Christianity in 1613 and kept his faith for life. He was beatified by the Vatican as a Catholic martyr in 2016, the 400th anniversary year of his death. His bronze statue proudly stands in Shiroato Park.

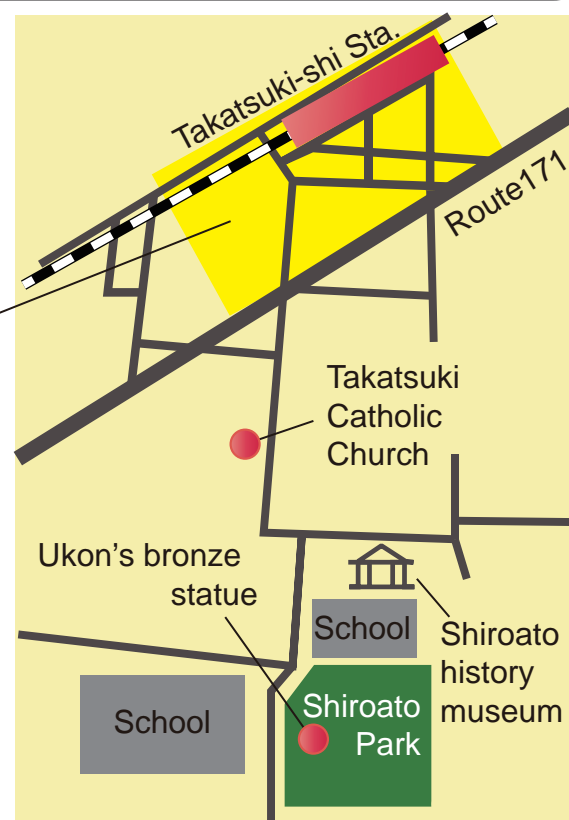


### Restaurant

A lot of restaurants and cafes in this area.

### How to get there

Walk south from Takatsuki-shi Sta. of Hankyu line for approx.15min.



Hot springs and restaurants- relaxing time after walking -



### Sansuikan

Address:  
3-2-2, Oazahara,  
Takatsuki-city, Osaka,  
569-1051, Japan

TEL: +81-72-687-4567  
E-mail:  
info@sansuikan.com  
Website:  
http://www.sansuikan.com/en/

※Sansuikan is Japanese style inn. you can reserve from website.



### Bijin-yu Syofuen

Address:  
4-20-3, Tsukawaki,  
Takatsuki-city, Osaka,  
569-1036, Japan

TEL: +81-72-689-6700  
E-mail:  
info@syofuen.co.jp  
Website:  
http://www.syofuen.co.jp/



Two hot springs are available near the park. This is a good place for simple nature experience and relaxation through all four seasons.

### How to get there

Take Takatsuki city bus 50 or 51 Line at the bus stop No.2 of the north exit of JR Takatsuki Sta. Get off at Tsukawaki stop, walk for approx.10 min along the road.







Takatsuki  
heritage

## Imashirozuka Kofun

- A tomb of an ancient emperor in Japan -

Built in the early 6th century, "Imashirozuka Kofun" is the largest key-hole shaped Kofun in the Yodogawa basin extended across Shiga, Kyoto, and Osaka. Now, the site has been developed into a historical park, called "Imashiro Daio-no-Mori Park", where you could go up the mound of Kofun, or look at arrays of "Haniwa". A historical museum with a souvenir shop is attached to the park. This is the place you can feel ancient Japanese culture handily.



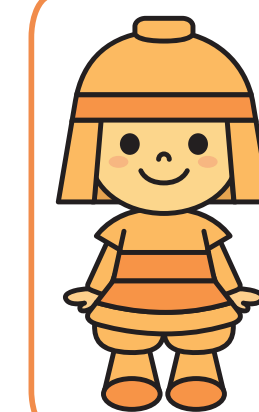
Aerial photograph of Imashirozuka Kofun  
(keyhole-shape)



Human-shaped Haniwa  
excavated from Imashirozuka Kofun

## What is "Kofun"?

"Kofun" are ancient mound tombs in which people of high position like emperors or kings in that era were buried, and were constructed between the late 3rd century and the late 6th century. "Kofun" vary in shape, except enormous ones, most of which are keyhole-shaped. And from "Kofun", many clay figures, shaped like humans, animals, houses and others, have been unearthed. These are called, "Haniwa", and considered to be placed to worship emperors in ancient times.



### "HANITAN"

-Takatsuki city mascot character-

"Hanitan" is the official mascot character of Takatsuki city. It was designed after a solidier-shaped Haniwa excavated from Imashirozuka Kofun.

### Restaurant

Sanadamaru  
(Sushi Bar)

Open: 11:00 ~ 14:30  
17:00 ~ 21:00  
(closed on Monday)

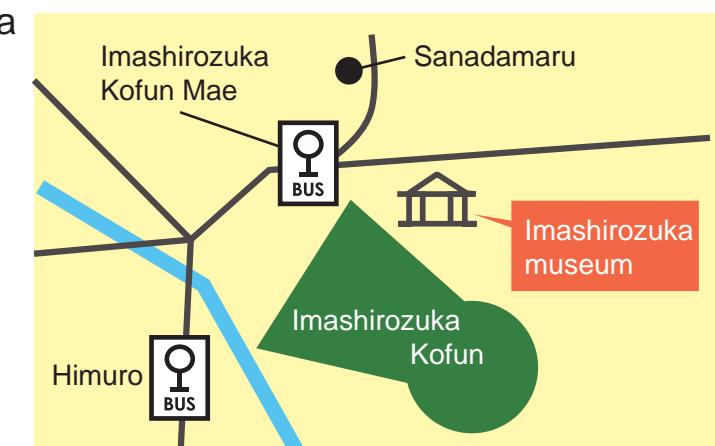
TEL: +81-72-669-9855

Address: 53-1, Okamoto-cho, Takatsuki-city, Osaka,  
569-1137, Japan



### How to get there

- ① Take Takatsuki city bus 72 Line either at the bus stop No.6 of the north exit of JR Takatsuki Sta or the bus stop No.1 of JR Settsu-tonda Sta. Get off at "Imashirozuka kofun Mae" stop in front of the museum.
- ② Take Takatsuki city bus 71-75,81 and 85 Line either at the bus stop No.6 of the north exit of JR Takatsuki Sta or the bus stop No.1,3 and 4 of JR Settsu-tonda Sta. Get off at "Himuro" stop and walk for approx.3 min.



"Imashirozuka museum"  
next to Imashirozuka Kofun



A souvenir shop and cafe  
in the museum

